



TRANQUIL  
Blissfully Yours.





There are new beginnings in life, and then there are moments where decisions are made to begin life anew. The stage when life's responsibilities dawn upon us and tectonic shifts take place in our outlook towards life. At that time we all need our little space that suits our lifestyle and inspires us to pursue our cherished dreams.



*Disclaimer: Images and visuals shown are only an architect's impression & are only indicative of the envisaged developments and the same are subject to approvals.*

**'Tranquil'** is a set of 2 and 3 BHK apartments carefully conceptualised and tastefully appointed keeping in mind life's basic necessities - space and light. Where every window opens to the skies above thus providing the glow one needs in life.

Tranquil comes to you from The House of Estates, Mysuru.

Tapovan Estates has a history of building aesthetic homes for nearly 2 decades with customers who relish their lives in a well designed space.



*Disclaimer: Images and visuals shown are only an architect's impression & are only indicative of the envisaged developments and the same are subject to approvals.*

## Location

74 apartments spread across three wings of four floors each is set in the midst of one of Mysore's most sought after neighbourhoods - Sharadadevi Nagar, known for its serenity and quietness. This one-acre property is in close proximity to a number of educational, healthcare and commercial establishments, as well as near many conveniences.



# Amenities

Repose Zone



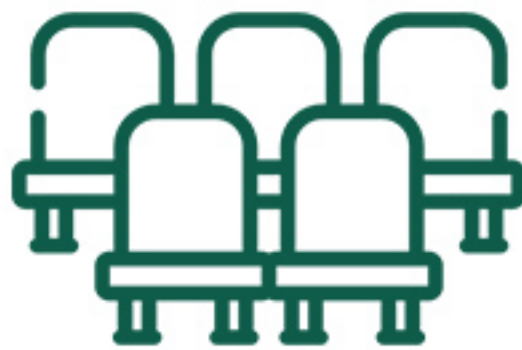
Swimming Pool

Jogging Track



Gym

Multi-Purpose  
Hall



Club House

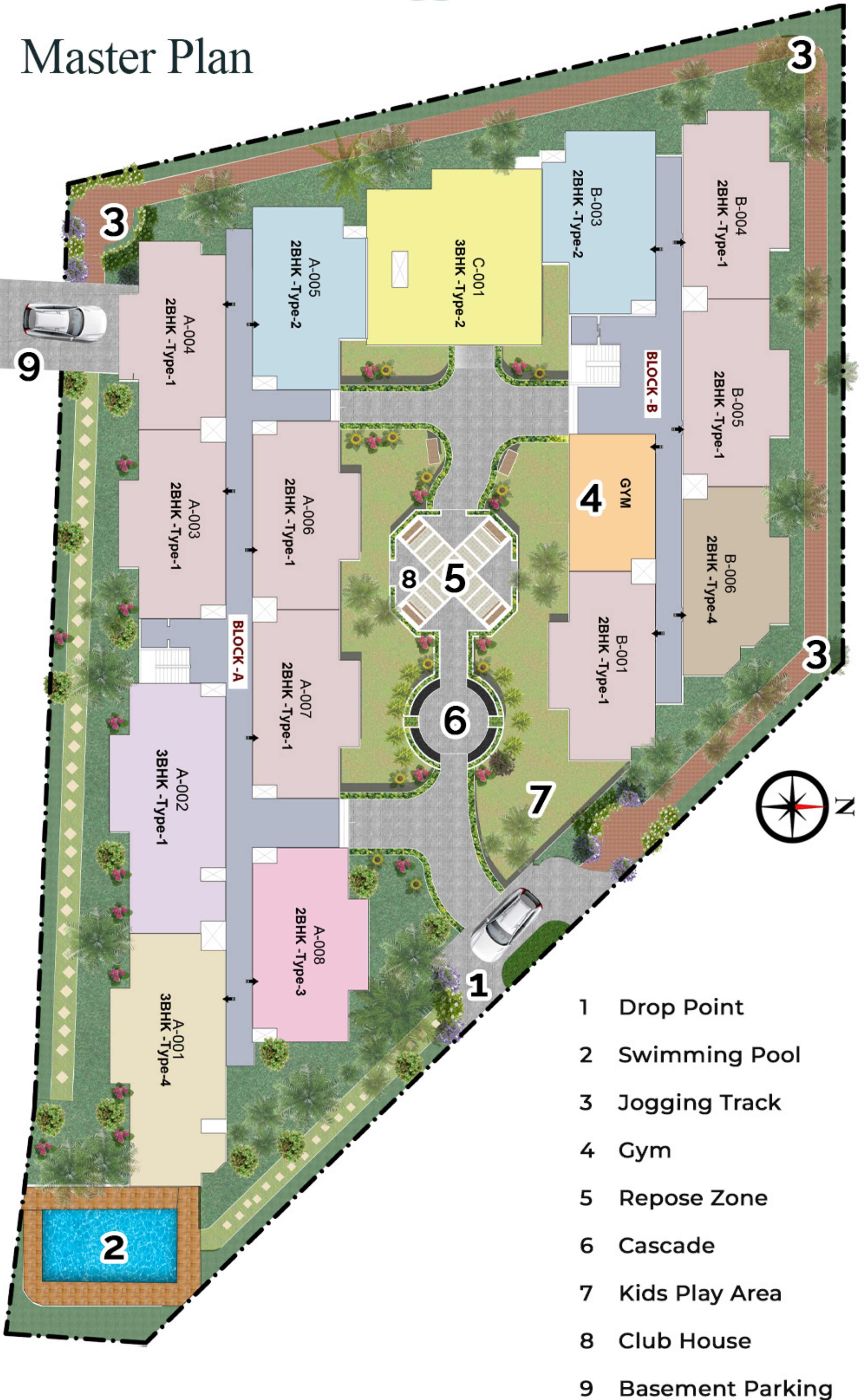
Kids Play Area



CCTV Security



# Master Plan

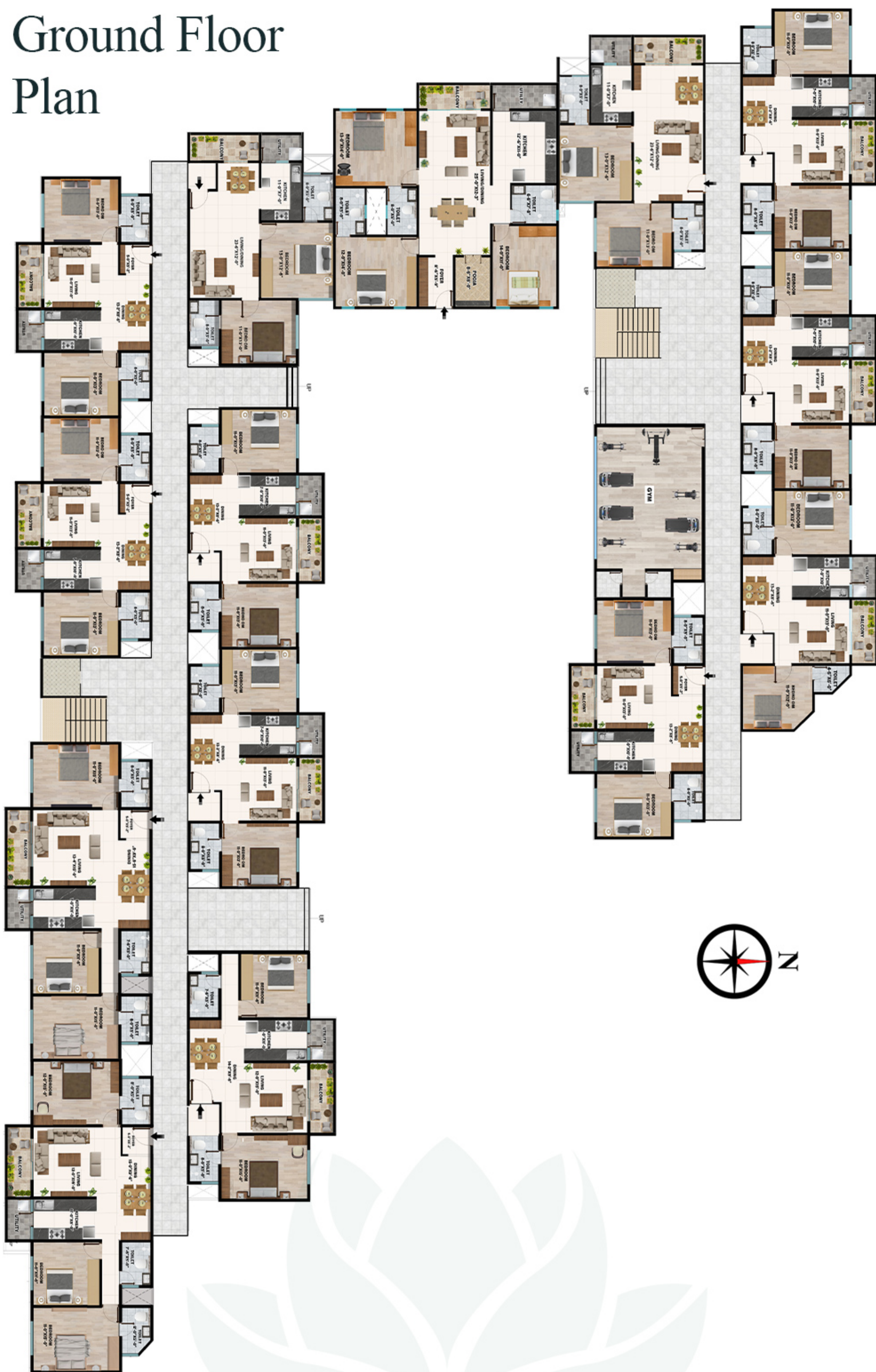


- 1 Drop Point
- 2 Swimming Pool
- 3 Jogging Track
- 4 Gym
- 5 Repose Zone
- 6 Cascade
- 7 Kids Play Area
- 8 Club House
- 9 Basement Parking

Disclaimer: All Layouts, Plans and locations are indicative and not to scale and are subject to change as may be decided by the company or competent authority.



# Ground Floor Plan



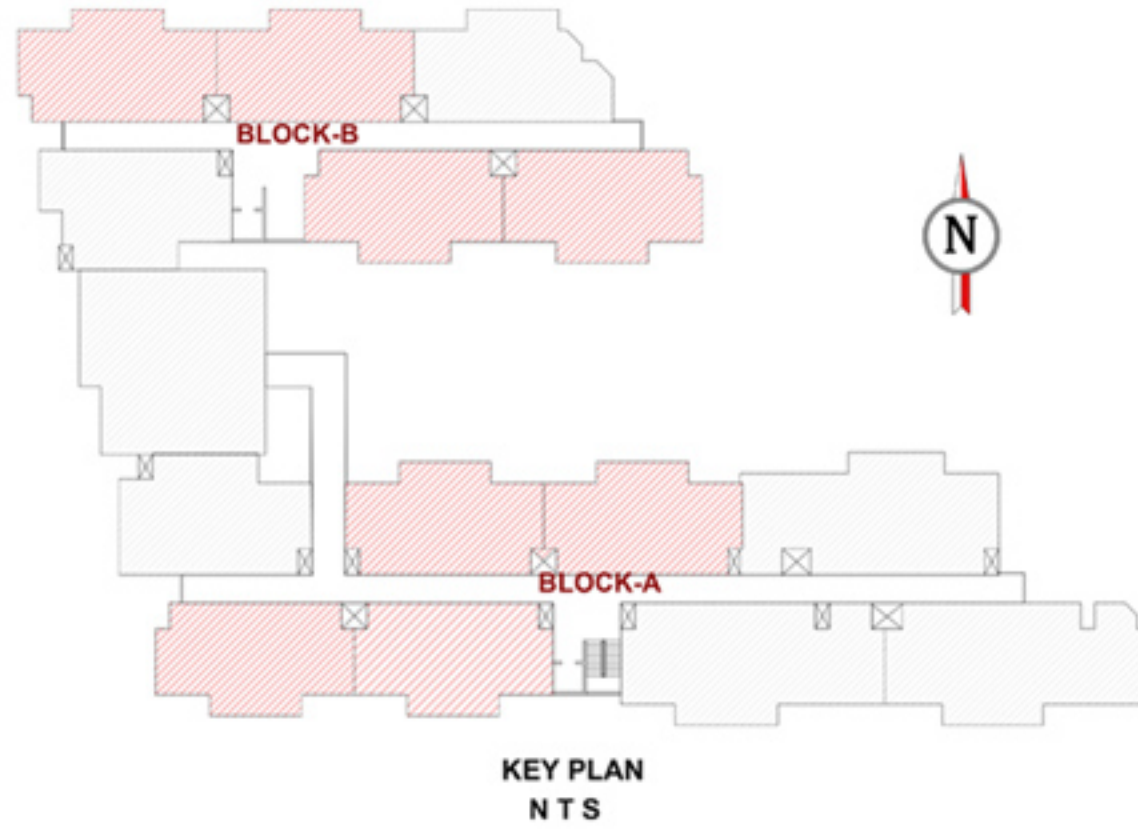
Disclaimer: All dimensions mentioned in the drawings may vary/differ due to construction contingencies & site conditions.







# 2 BHK Type 1

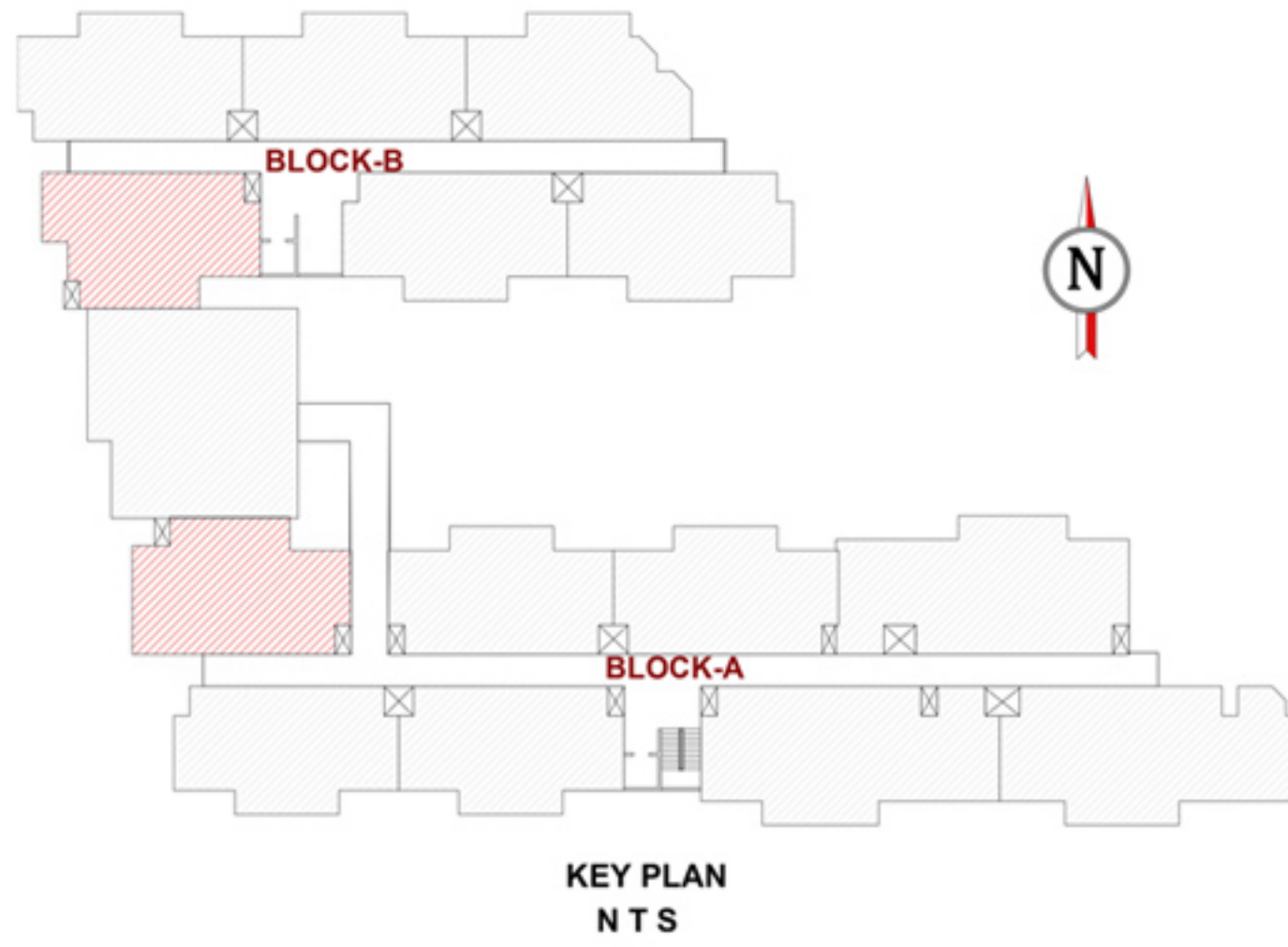


BLOCK NAME	A & B	
	SQ.FT	SQ.M
CARPET AREA	786.26	73.05
B U A	876.50	81.43
S B A	1055.31	98.04

Disclaimer: All dimensions mentioned in the drawings may vary/differ due to construction contingencies & site conditions.



# 2 BHK Type 2

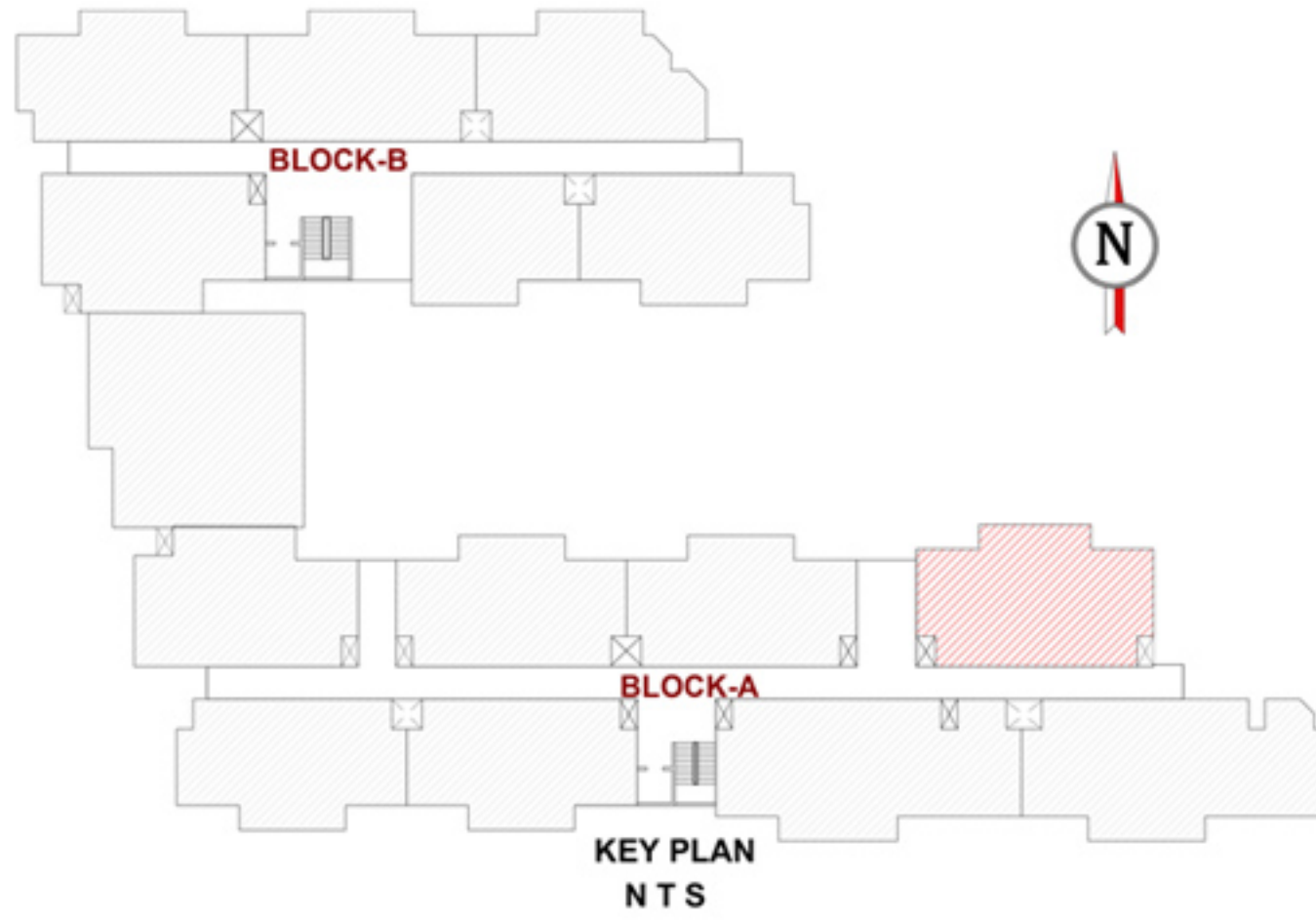


BLOCK NAME	A & B	
	SQ.FT	SQ.M
CARPET AREA	828.24	76.95
B U A	926.20	86.05
S B A	1115.31	103.60

Disclaimer: All dimensions mentioned in the drawings may vary/differ due to construction contingencies & site conditions.



# 2 BHK Type 3

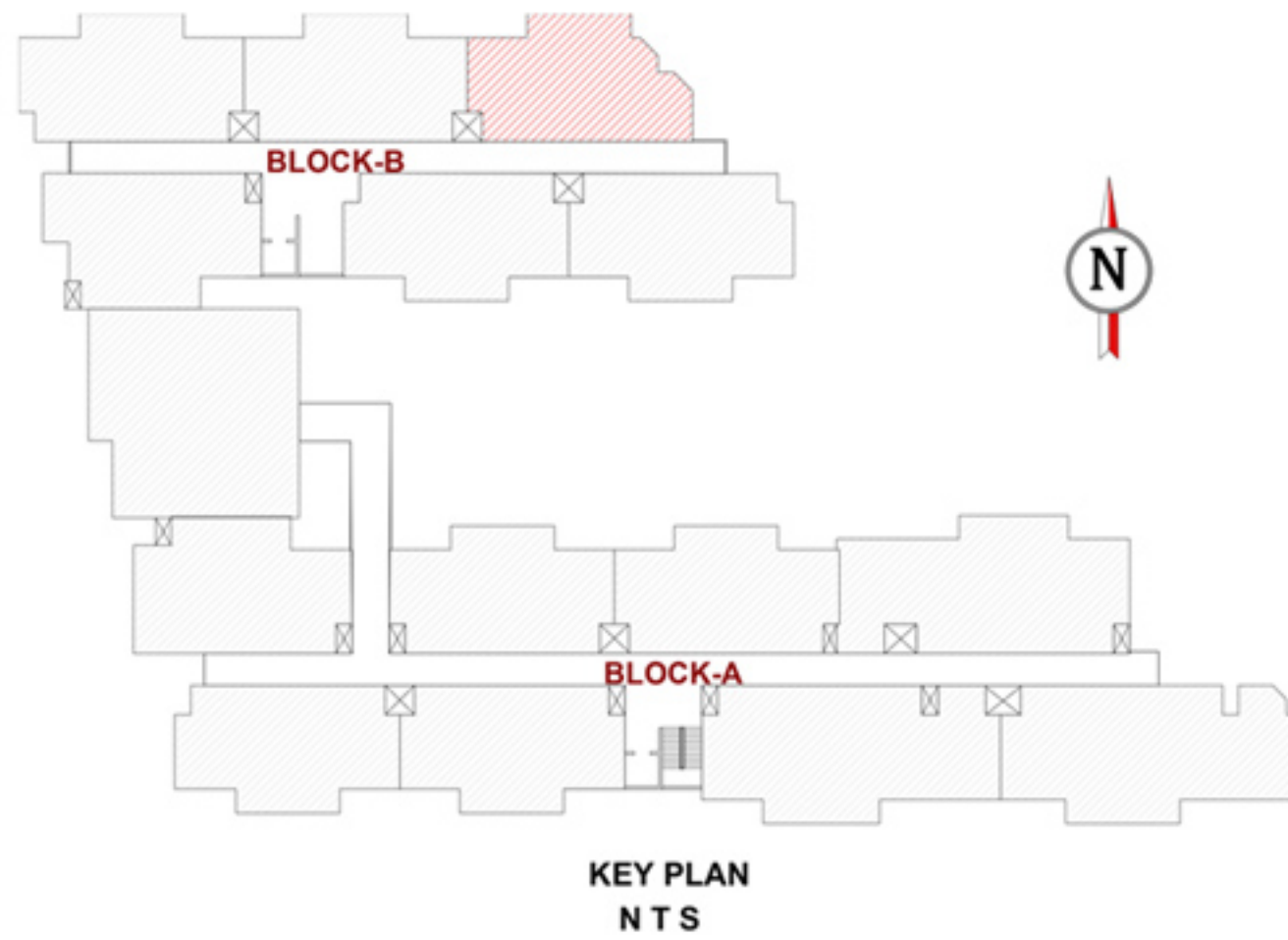


BLOCK NAME	A	
	SQ.FT	SQ.M
CARPET AREA	850.28	78.99
B U A	991.76	92.14
S B A	1194.08	110.93

Disclaimer: All dimensions mentioned in the drawings may vary/differ due to construction contingencies & site conditions.



# 2 BHK Type 4

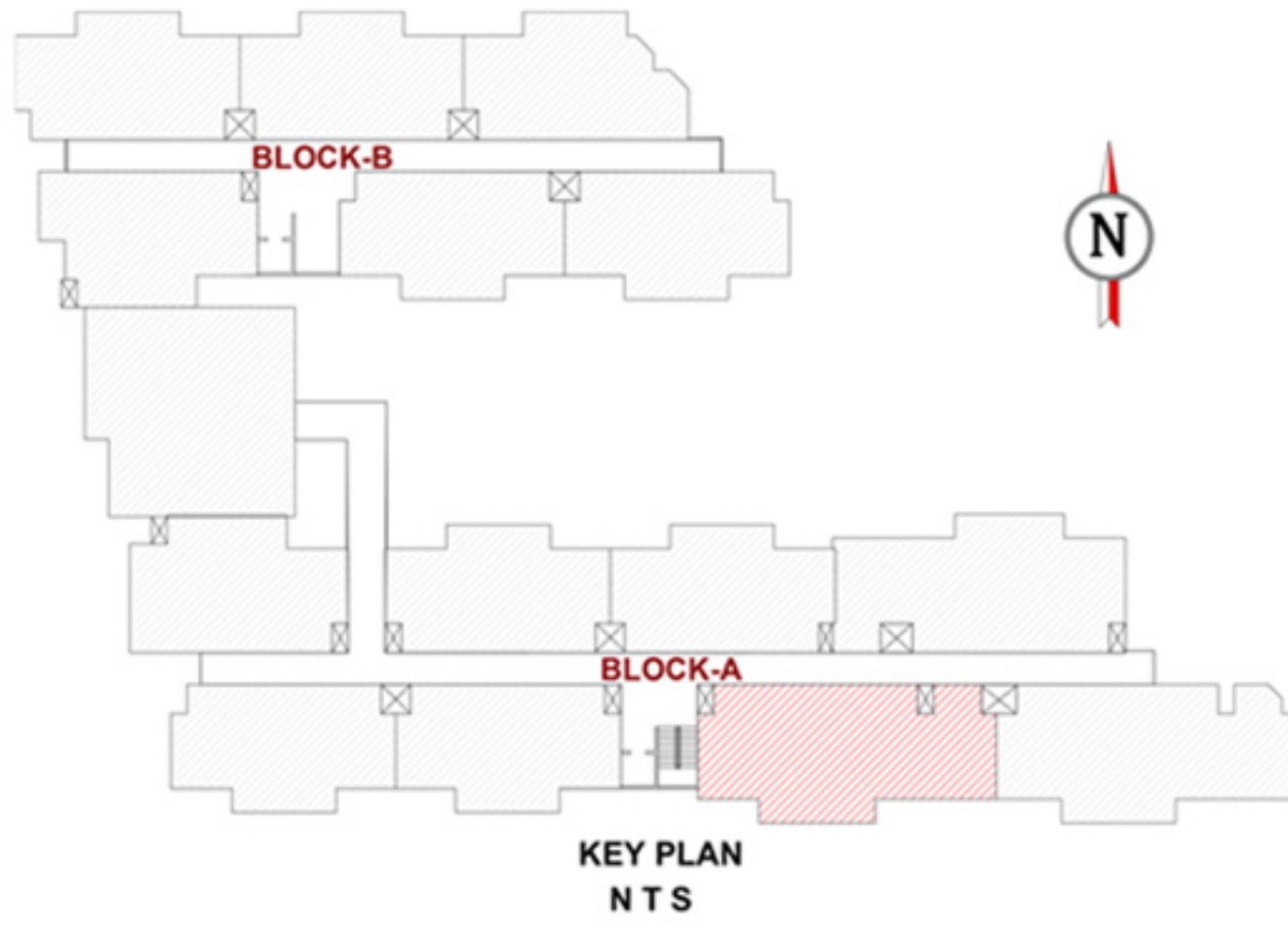


BLOCK NAME	B	
	SQ.FT	SQ.M
CARPET AREA	725.26	67.38
B U A	838.88	77.93
S B A	1010.85	93.83

Disclaimer: All dimensions mentioned in the drawings may vary/differ due to construction contingencies & site conditions.



# 3 BHK Type 1

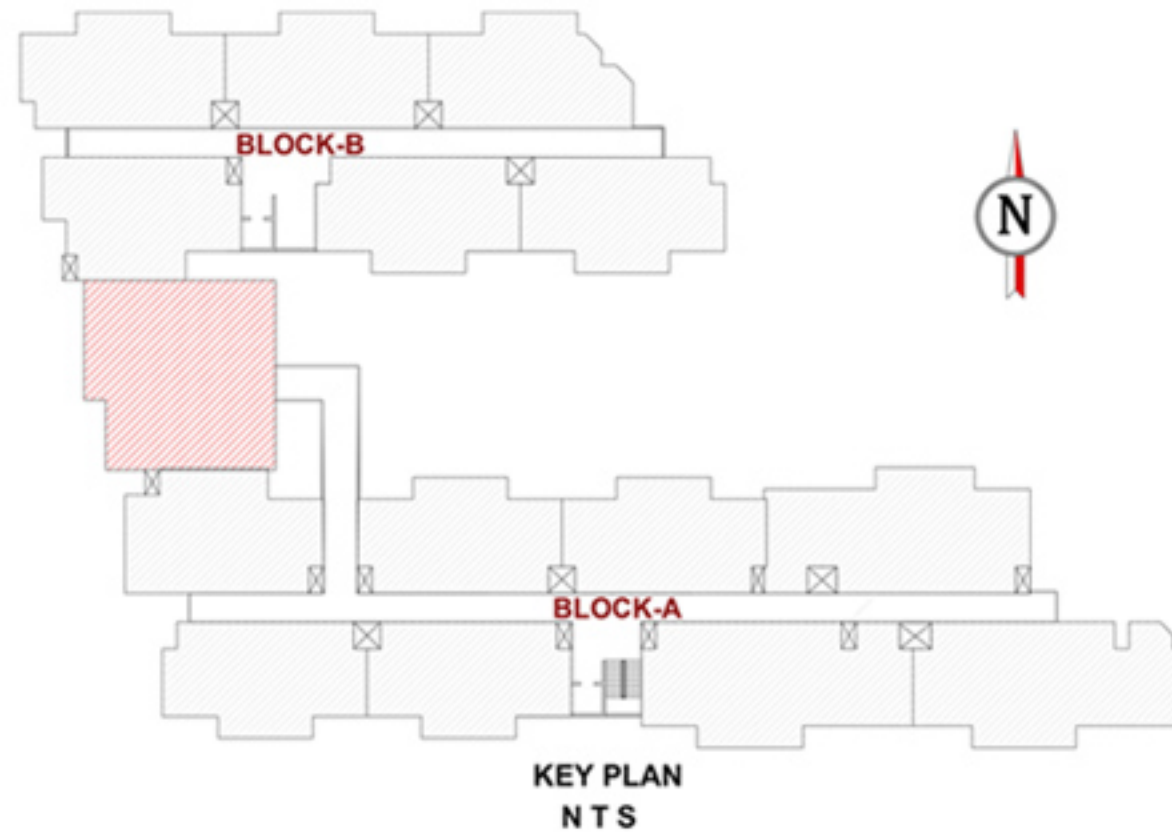


BLOCK NAME	A	
	SQ.FT	SQ.M
CARPET AREA	1121.95	104.23
B U A	1252.74	116.38
S B A	1508.30	140.12

*Disclaimer: All dimensions mentioned in the drawings may vary/differ due to construction contingencies & site conditions.*



# 3 BHK Type 2

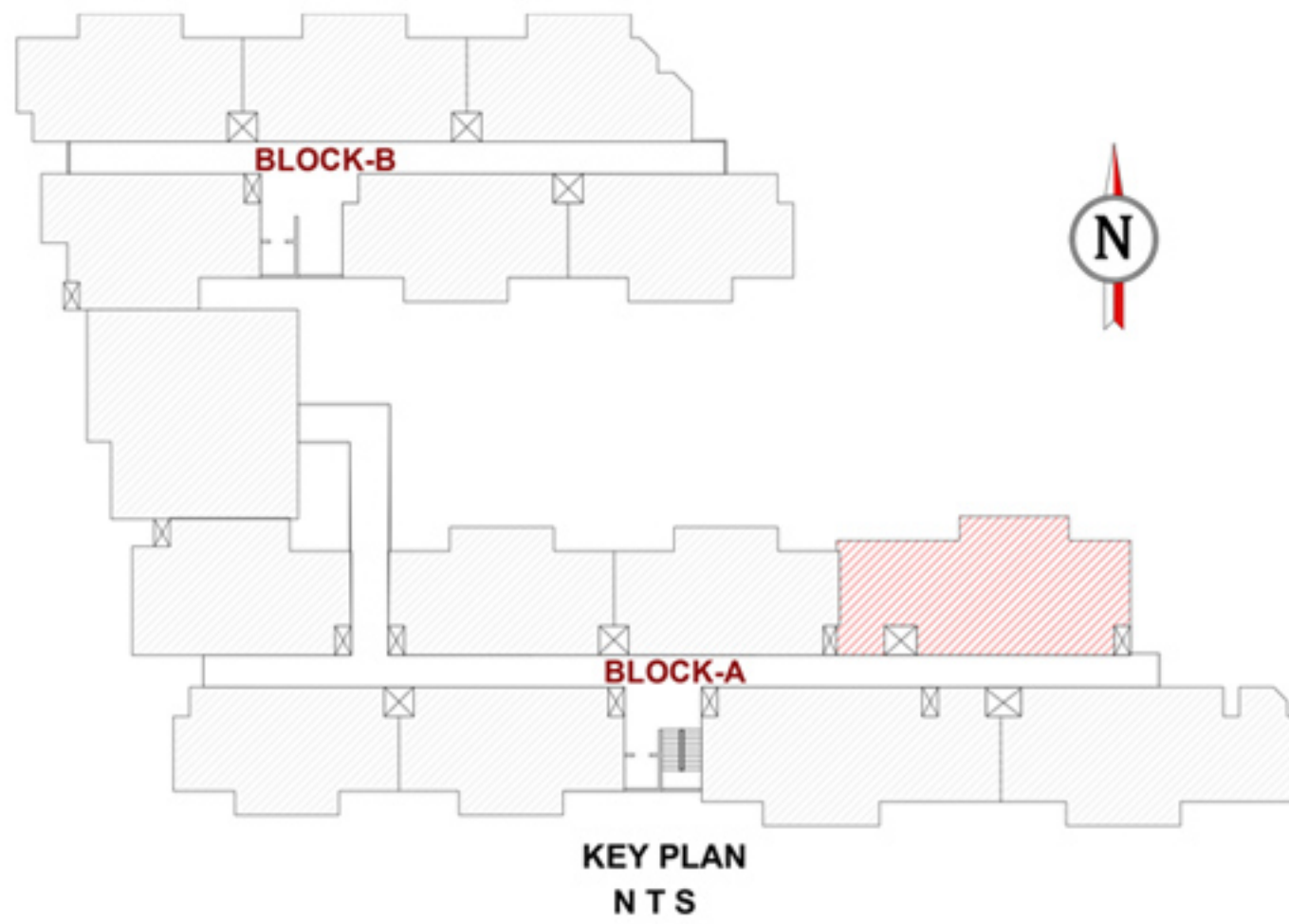


BLOCK NAME	A	
	SQ.FT	SQ.M
CARPET AREA	1313.53	122.03
B U A	1439.58	133.74
S B A	1733.25	161.02

Disclaimer: All dimensions mentioned in the drawings may vary/differ due to construction contingencies & site conditions.



# 3 BHK Type 3

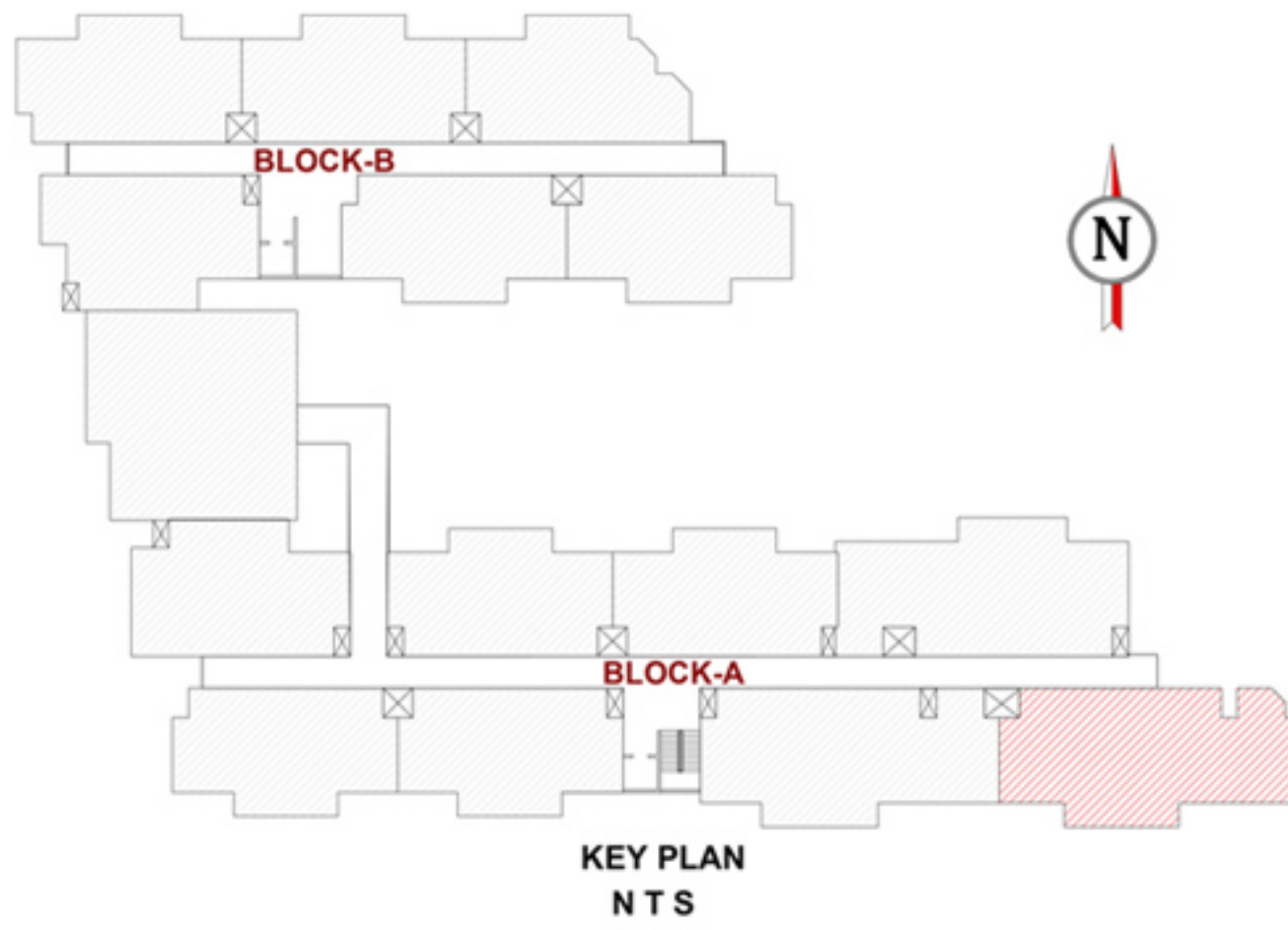


BLOCK NAME	A	
	SQ.FT	SQ.M
CARPET AREA	1090.51	101.31
B U A	1218.25	113.18
S B A	1466.77	136.27

Disclaimer: All dimensions mentioned in the drawings may vary/differ due to construction contingencies & site conditions.



# 3 BHK Type 4



BLOCK NAME	A	
	SQ.FT	SQ.M
CARPET AREA	1126.86	104.69
B U A	1254.02	116.50
S B A	1509.84	140.27

Disclaimer: All dimensions mentioned in the drawings may vary/differ due to construction contingencies & site conditions.





*Disclaimer: Images and visuals shown are only an architect's impression & are only indicative of the envisaged developments and the same are subject to approvals.*

## The Uniqueness

As hard and expensive as it is to secure a piece of earth in a sought after locality, 'Tranquil' is designed to be priced at levels that are friendly. At stake is a home for an unthinkable value when you put location and construction together.

Need we say anything more? If yes, call us right away on +91 80 6969 6262



# Specifications



**Steel:** Sail, JSW or equivalent.

**Cement:** Chettinad, penna cement or equivalent.

**Aggregates:** VSI grade materials. In accordance with the NBC.

**Sand:** Manufactured sand.

**Tiles:** RAK, Nitco or equivalent.

**Electrical wiring:** Havells, Polycab or equivalent.

**Electrical Switches:** Anchor Roma, Leon International or equivalent.

**Electrical switch gears and distribution box:** Indo asian, Abb or equivalent.

**Plumbing and sanitary pipes and its fittings:** Astral, Ashirwad or equivalent.

**Sanitary ware:** Kohler, Hindware, Parryware or Equivalent.

**CP fittings:** Kohler, Jaguar, Grohe or equivalent.

**Windows:** Lg hausys, Aparna, Encraft or equivalent.

**Doors:** Premium Engineered doors.

**Door Locks:** Europa, Yale or equivalent.

**Paint:** Asian paints, Berger or equivalent.

**Kitchen sink:** Premium stainless steel sink. Like NIRALI or equivalent.

**Lift:** Mitsubishi, Johnson, Thyssenkrupp or equivalent



Site No - 3070, 3rd stage, Dattagalli, Mysore - 570022  
PH: 080 6969 6262 | Email: [contact@tapovanestates.com](mailto:contact@tapovanestates.com)  
[www.tapovanestates.com](http://www.tapovanestates.com)

*Disclaimer: The brochure is purely conceptual & points mentioned herein are not a legal offering nor will be part of the agreement. Promoters reserve the right to amend the layout, plans, elevation designs, specification, amenities, etc., without prior notice.*